

Hampshire Water Transfer and Water Recycling Project Environmental Statement - Figure 11.6 Potential source of contamination within the study area

VOLUME NUMBER: 6

PLANNING INSPECTORATE SCHEME NUMBER: WA010002

APPLICATION DOCUMENT REFERENCE: 6.3

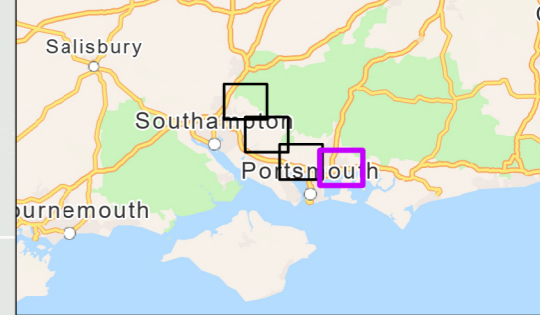
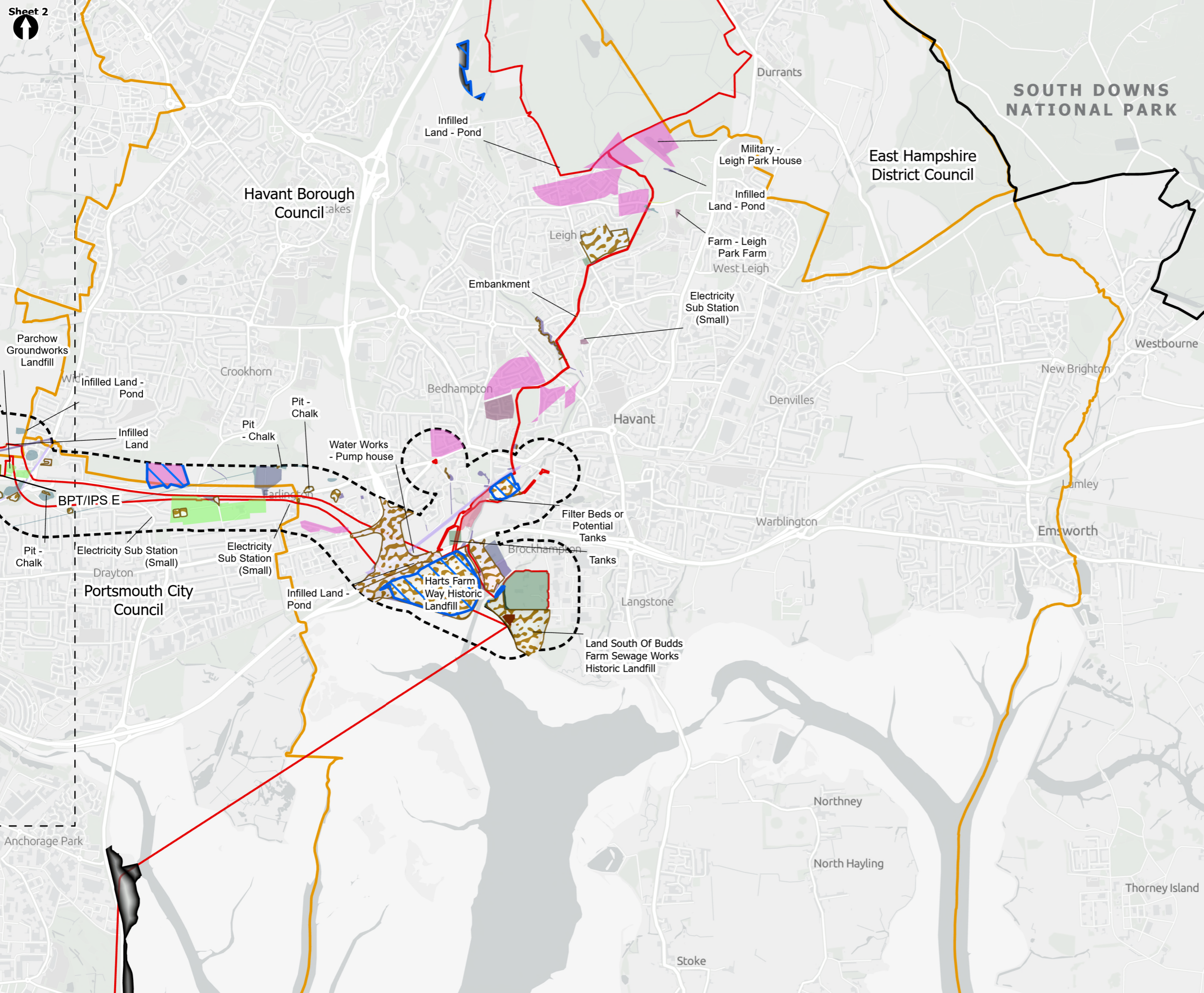
APFP REGULATION: 5(2)(a)

May 2026

Version 0



from
**Southern
Water** 



- Order Limits
- 250m Study Area
- National Parks
- Local planning authorities
- Limits of Deviation for Budds Farm Pumping Station
- Sheet Extent Boxes 1:30K
- Known or Suspected Filled Ground (made ground soils)
- Historic Landfill Sites
- Areas of Concern
- Potential Sources of Contamination**
- Electricity Sub Station
- Embankment
- Farm
- Garage
- Infilled Land
- Landfill
- Military
- Pit
- Railway
- Tank
- Waste Facility
- Wastewater Treatment Works
- Water Works
- Works
- Above Ground Plant**
- Break Pressure Tank & Intermediate Pumping Station

Coordinate system: British National Grid; Datum: OSGB 1936

Data sources: Sources: Esri, TomTom, Garmin, FAO, NOAA, USGS, © OpenStreetMap contributors, and the GIS User Community, Contains OS data © Crown Copyright and database right 2026. Contains data from OS Zoomstack

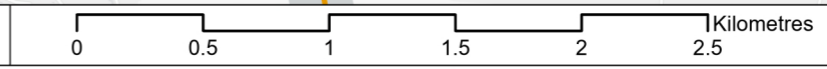
PROJECT TITLE
Hampshire Water Transfer and Water Recycling Project

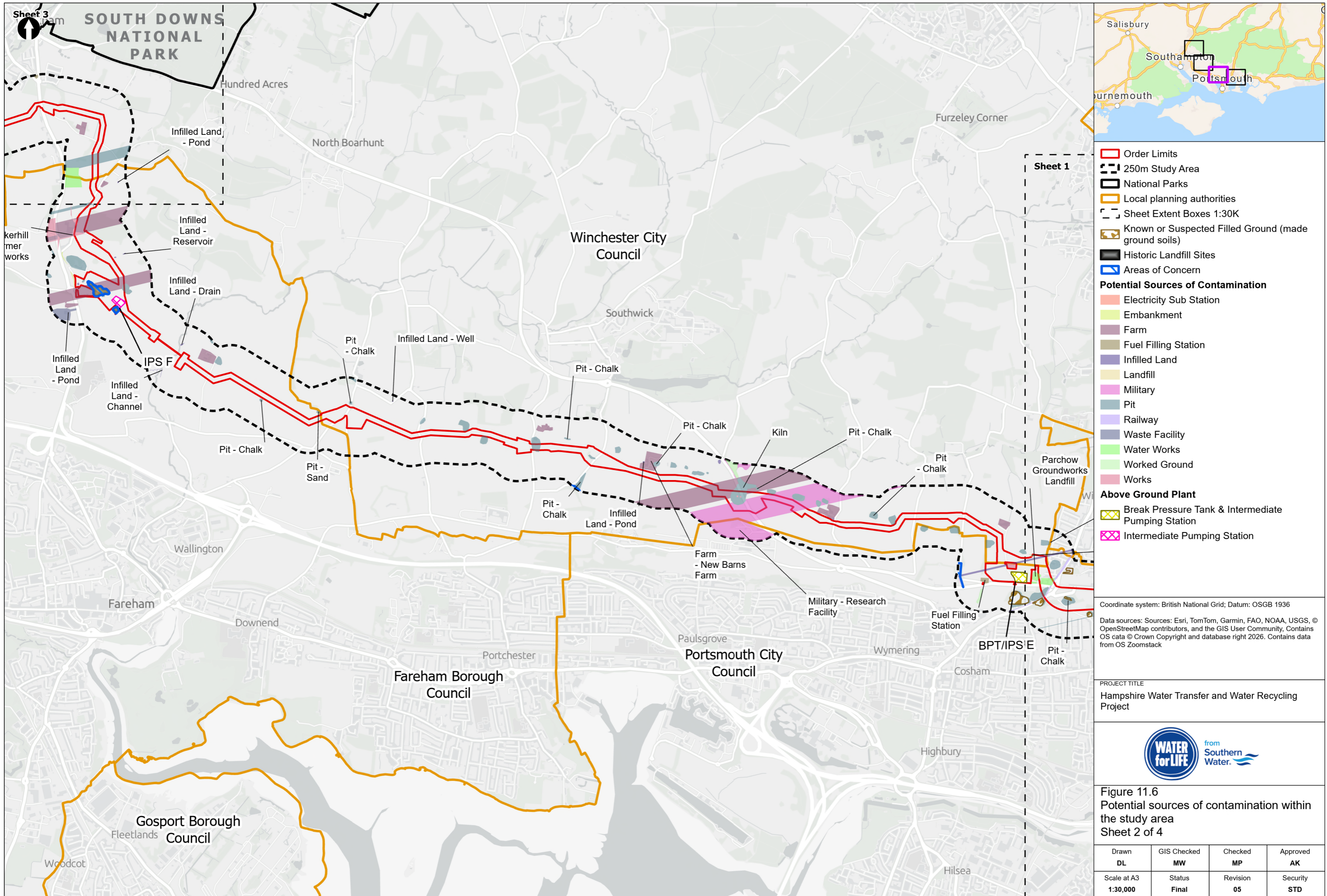


Figure 11.6
Potential sources of contamination within the study area
Sheet 1 of 4

Drawn DL	GIS Checked MW	Checked MP	Approved AK
Scale at A3 1:30,000	Status Final	Revision 05	Security STD

Drawing Number
PC5223-RHD-ES-ZZ-D-Z-0014





Coordinate system: British National Grid; Datum: OSGB 1936
 Data sources: Sources: Esri, TomTom, Garmin, FAO, NOAA, USGS, © OpenStreetMap contributors, and the GIS User Community, Contains OS data © Crown Copyright and database right 2026. Contains data from OS Zoomstack

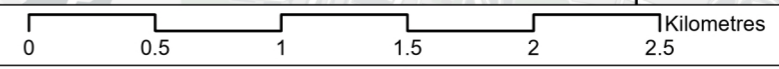
PROJECT TITLE
 Hampshire Water Transfer and Water Recycling Project



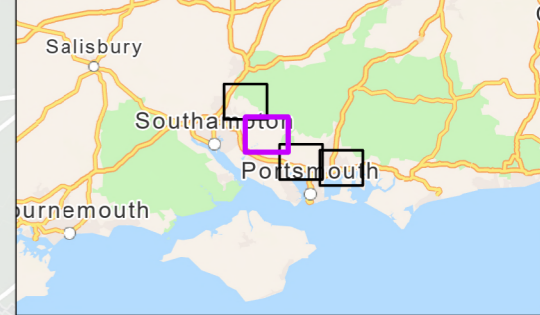
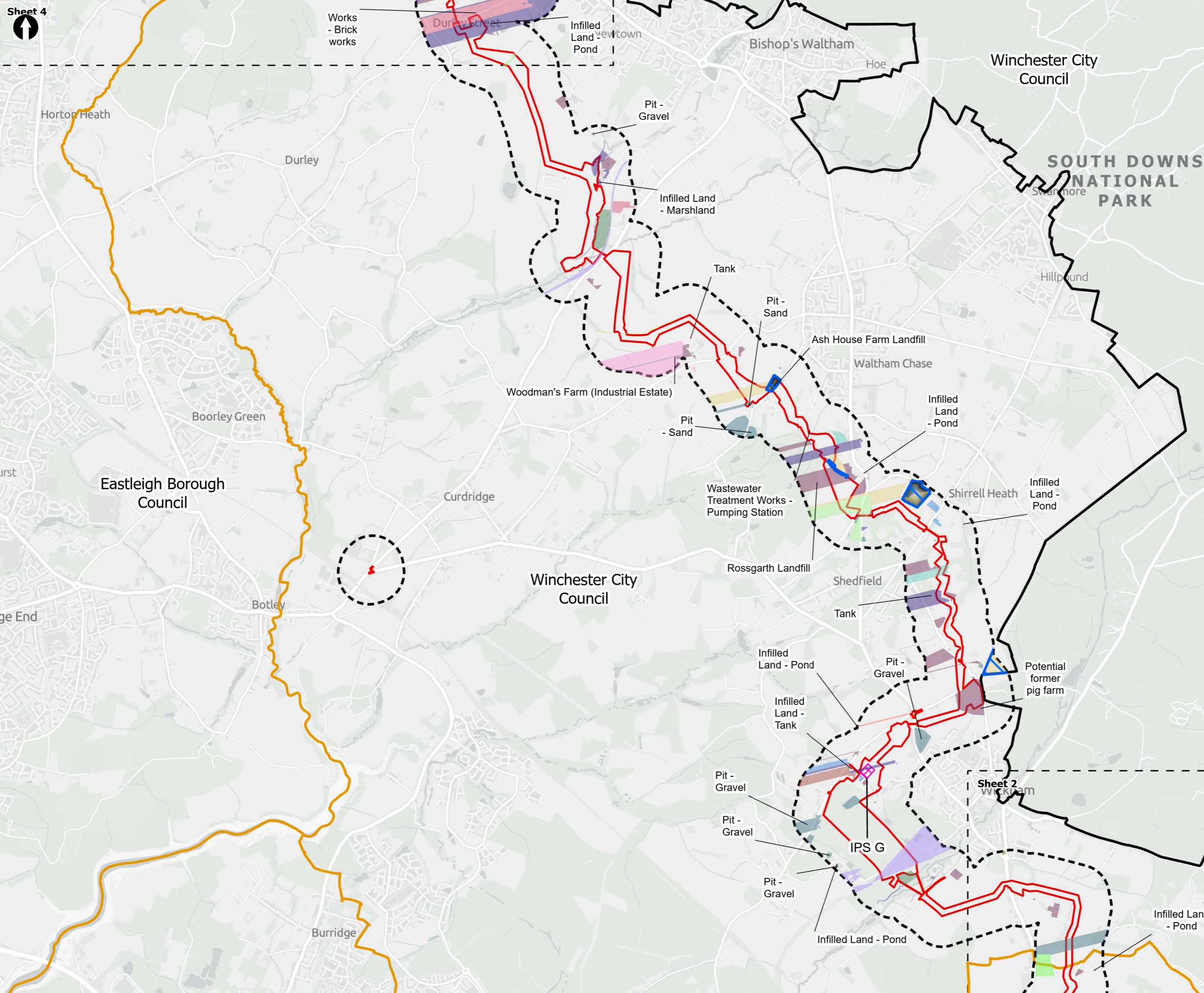
Figure 11.6
 Potential sources of contamination within the study area
 Sheet 2 of 4

Drawn DL	GIS Checked MW	Checked MP	Approved AK
Scale at A3 1:30,000	Status Final	Revision 05	Security STD

© Southern Water 2026
 This document is issued for the party which commissioned it and for specific purposes connected with the captioned project only. It should not be relied upon by any other party or used for any other purpose. We accept no responsibility for the consequences of this document being relied upon by any other party, or being used for any other purpose, or containing any error or omission which is due to an error or omission in data supplied to us by other parties.



Drawing Number
PC5223-RHD-ES-ZZ-D-Z-0014



Order Limits
 250m Study Area
 National Parks
 Local planning authorities
 Sheet Extent Boxes 1:30K
 Historic Landfill Sites
 Areas of Concern

Potential Sources of Contamination

- Agriculture
- Electricity Sub Station
- Embankment
- Farm
- Fuel Filling Station
- Garage
- Industrial Estate
- Infilled Land
- Landfill
- Nursery
- Pit
- Railway
- Tank
- Wastewater Treatment Works
- Water Works
- Worked Ground
- Works

Above Ground Plant

- Intermediate Pumping Station

Coordinate system: British National Grid; Datum: OSGB 1936

Data sources: Sources: Esri, TomTom, Garmin, FAO, NOAA, USGS, © OpenStreetMap contributors, and the GIS User Community, Contains OS data © Crown Copyright and database right 2026. Contains data from OS Zoomstack

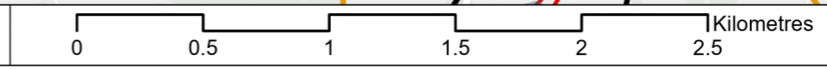
PROJECT TITLE
 Hampshire Water Transfer and Water Recycling Project

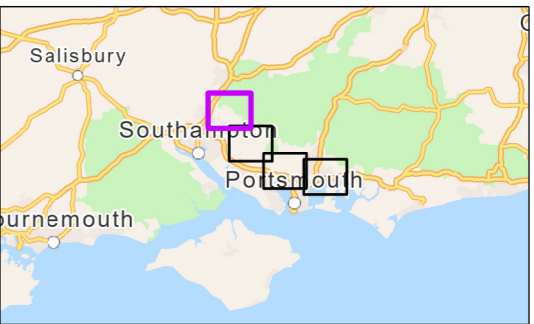
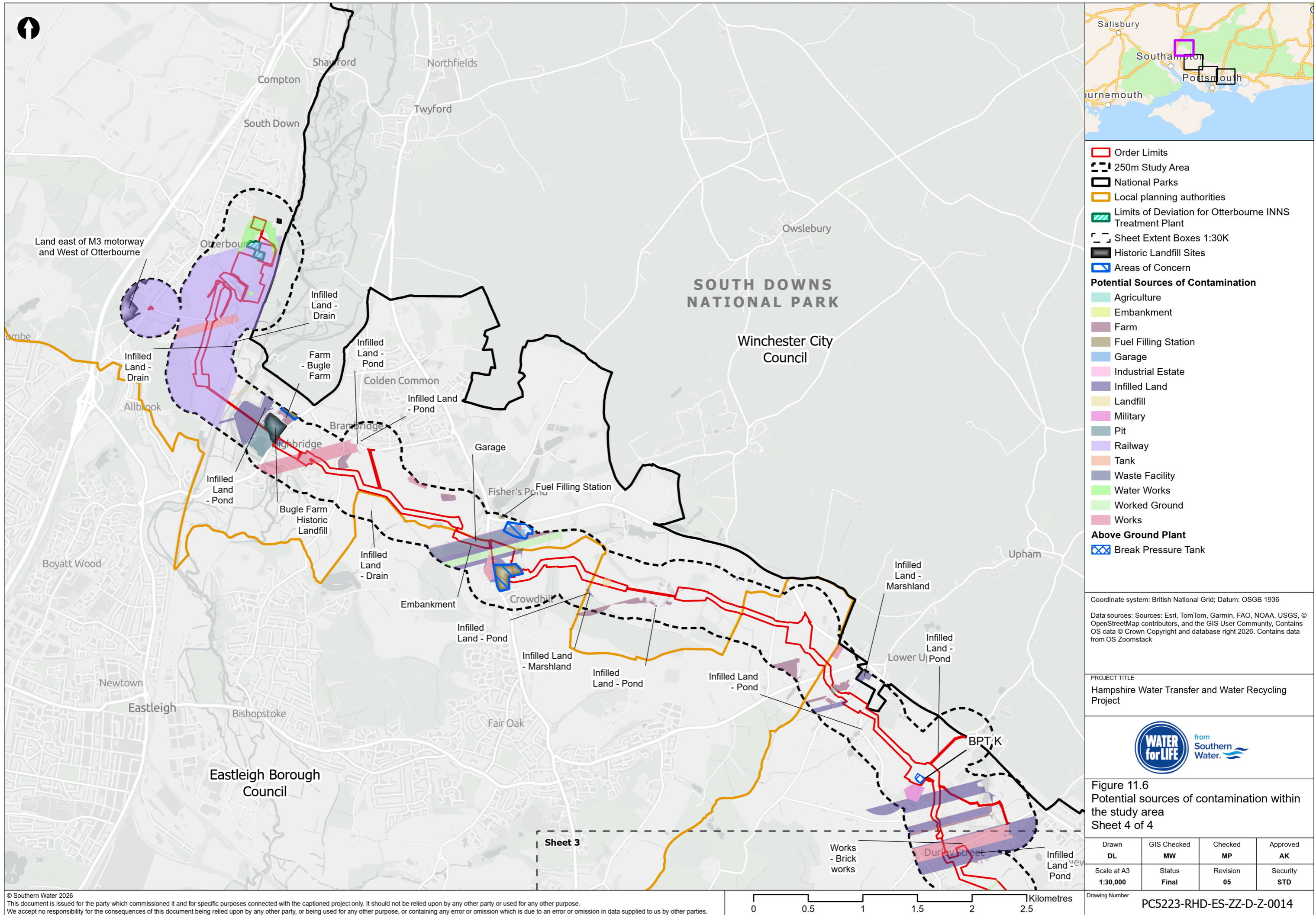


Figure 11.6
 Potential sources of contamination within the study area
 Sheet 3 of 4

Drawn DL	GIS Checked MW	Checked MP	Approved AK
Scale at A3 1:30,000	Status Final	Revision 05	Security STD

Drawing Number
 PC5223-RHD-ES-ZZ-D-Z-0014





- Order Limits
 - 250m Study Area
 - National Parks
 - Local planning authorities
 - Limits of Deviation for Otterbourne INNS Treatment Plant
 - Sheet Extent Boxes 1:30K
 - Historic Landfill Sites
 - Areas of Concern
- Potential Sources of Contamination**
- Agriculture
 - Embankment
 - Farm
 - Fuel Filling Station
 - Garage
 - Industrial Estate
 - Infilled Land
 - Landfill
 - Military
 - Pit
 - Railway
 - Tank
 - Waste Facility
 - Water Works
 - Worked Ground
 - Works
- Above Ground Plant**
- Break Pressure Tank

Coordinate system: British National Grid; Datum: OSGB 1936

Data sources: Sources: Esri, TomTom, Garmin, FAO, NOAA, USGS, © OpenStreetMap contributors, and the GIS User Community, Contains OS data © Crown Copyright and database right 2026. Contains data from OS Zoomstack

PROJECT TITLE
Hampshire Water Transfer and Water Recycling Project



Figure 11.6
Potential sources of contamination within the study area
Sheet 4 of 4

Drawn DL	GIS Checked MW	Checked MP	Approved AK
Scale at A3 1:30,000	Status Final	Revision 05	Security STD

Drawing Number
PC5223-RHD-ES-ZZ-D-Z-0014

© Southern Water 2026
This document is issued for the party which commissioned it and for specific purposes connected with the captioned project only. It should not be relied upon by any other party or used for any other purpose. We accept no responsibility for the consequences of this document being relied upon by any other party, or being used for any other purpose, or containing any error or omission which is due to an error or omission in data supplied to us by other parties.

